

Coinsulate in

STYLE

SEMIN INSULATION



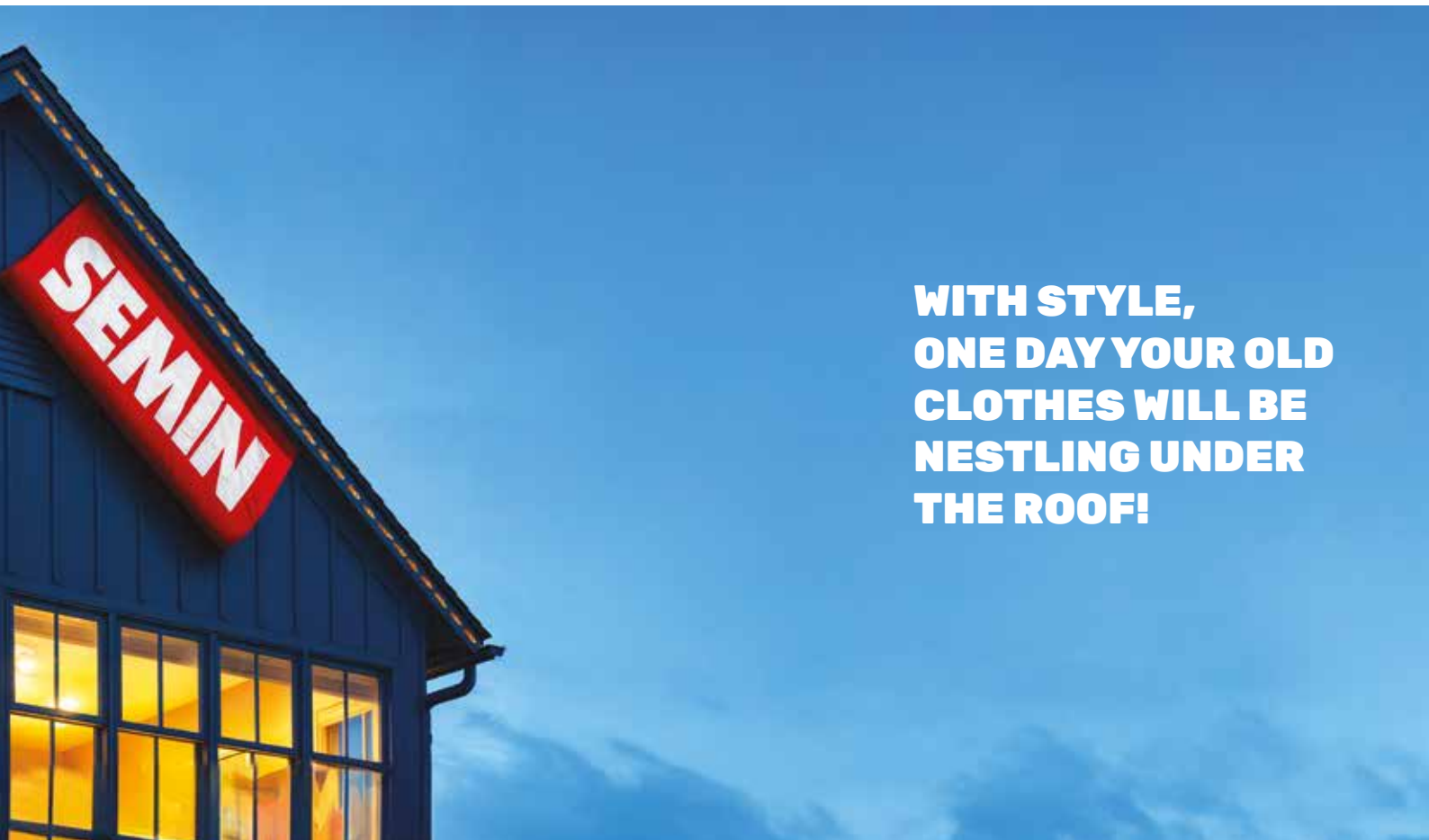
LOOSE-FILL INSULATION

MADE FROM 100% RECYCLED
TEXTILE FIBRES



SEMIN
INSULATION

SEMIN has chosen to take action for the planet by producing a new loose-fill insulation that reflects the company's commitments, a local product made in France from 100% recycled textile fibres. This new insulation made from bio-based materials offers excellent thermal and acoustic properties in unused and difficult-to-access attic spaces. It is composed of blow-in flakes that can be applied using all types of blowers. By choosing to insulate your attic with **STYLE**, you are choosing comfort at home in every season.



**WITH STYLE,
ONE DAY YOUR OLD
CLOTHES WILL BE
NESTLING UNDER
THE ROOF!**



As attics are particularly prone to heat loss, they are one of the most important places to insulate to reduce your house's overall energy consumption. Insulating your attic with **STYLE** will save you at least **30% on your energy bills.**

QUICK AND EASY TO INSTALL

SEMIN's loose-fill insulation for unused attic spaces is composed of cotton-fibre flakes that are suitable for all roof shapes. With STYLE insulation, installed with the recommended dedicated membrane:

SEMIN HYGRO-REGULATING VAPOUR BARRIER

You will be able to meet the thermal performance requirements for an RE2020-compliant building.

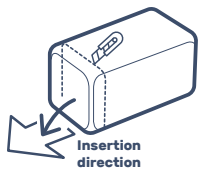


SUPPORT FOR HOME ENERGY UPGRADES

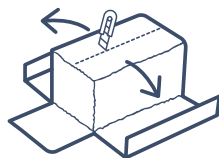
MINIMUM THERMAL RESISTANCE

R=7M² K/W

- SEMIN SEM'VAP
- 445 mm of STYLE insulation



- 1** Cut the bundle along the three sides.



- 2** Use a utility knife to make an incision in the upper part of the bundle.



- 3** Load one half into the machine in the correct direction.



- 4** Completely remove the plastic film and pour into the machine, crumbling the material in the process.

LIGHTWEIGHT INSULATION

STYLE is the ideal biobased insulation for renovation. It does not require any reinforcement of the metal structure of R10 ceilings. Compatible with existing structures in renovation projects.

R=7
3,63 KG

R=8
4,25 KG

R=10
5,25 KG

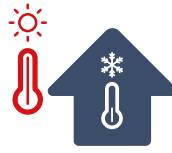
Insulation from 0 to 6 kg/m²
60 cm centre distance

THE BENEFITS OF STYLE



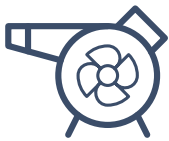
EASY INSTALLATION

- Extremely soft. Non-irritating material.
- Little dust, which improves comfort and visibility when blowing.



COMFORT AND QUALITY OF LIFE IN THE HOME

- Summer comfort: ultra heat-resistant cotton fibre to keep your home as cool as possible.
- Thermal performance:
Lambda : 0.044 W/(m.K) Acermi certified (n° : 24/D/275/1654).
- Protects against cold, heat and noise.



CAN BE USED WITH MOST MACHINES

Short fibres can be used with all blowing machines and most blowing and carding machines*.

* cotton opens out up three times more than other insulation; refer to the carding machine user's guide on the STYLE web page



GUARANTEE AND SUSTAINABILITY

Performance and efficiency guaranteed for 50 years. Sustainable, highly resistant textile fibres.



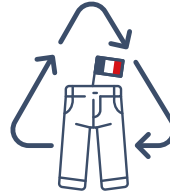
TIME-SAVING INSTALLATION

- Excellent material optimisation. Reduced handling:

1 pallet = 100m² of insulation for an R7 project.

- Excellent coverage: quick, even insulation for energy-efficient and comfortable buildings.

The evenness of the material eliminates thermal bridges and guarantees quality insulation in every nook and cranny.



MILITANT & LOCAL

- Insulation made from 100% recycled clothing.
- Designed and manufactured in central France.
- 100% recyclable.
- "Origine France Garantie" certified product.



ACERMI
N° : 24/D/275/1654

CC FAT
AVIS
TECHNIQUE

N°: 20/17-3988_V2-E1



APPLICATION GUIDE

CPT 3693_V2



REACTION TO FIRE

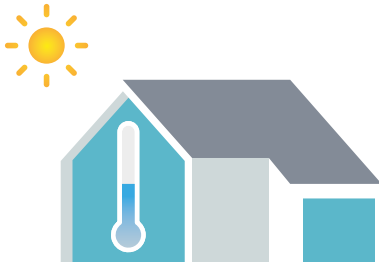
B-s2,d0

EMISSIONS INTO INDOOR AIR*



ANTI-FUNGAL

COMFORT AND QUALITY OF LIFE AT HOME



STYLE is made from cotton, a thermal insulator that provides excellent comfort at home in summer. It delays the entry of heat into the building until night, when the exterior temperature is lowest, thus limiting the warming of the house. By keeping your home cool when it's hot, **STYLE** guarantees thermal comfort all year round.

UNDERSTANDING PHASE SHIFT

Phase shift is the ability of an insulating material to store heat and release it again. It is expressed as the time difference in hours between the outdoor heat peak and the indoor heat peak.

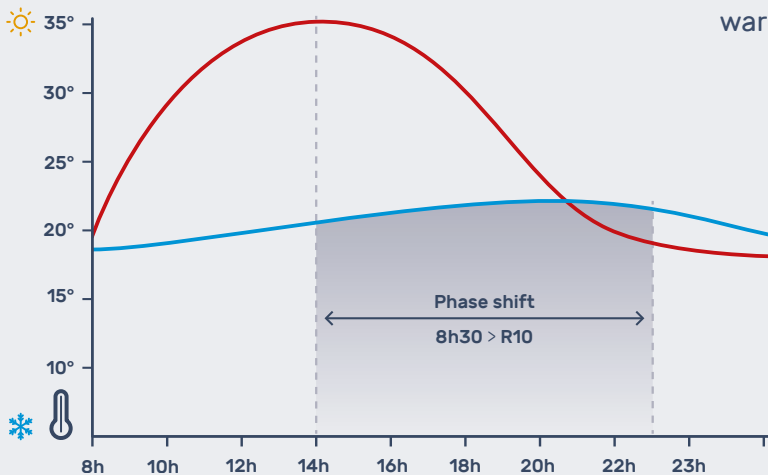
Two factors are taken into account in calculating the degree of phase shift, which can affect surface temperature and therefore **COMFORT AT HOME**.

Diffusivity: a material's capacity to conduct thermal energy quickly or slowly.

Cotton has low diffusivity and conducts heat very slowly: **SUMMER COMFORT**.

Effusivity: Speed with which a material absorbs the flow of heat.

Cotton has a high effusivity, storing heat without warming up: **WINTER COMFORT**.



R7 6h

R8 6h45

R10 8h30

— External temperature

— Indoor temperature

DID YOU KNOW?

Air conditioning consumes much more energy than heating. Insulating against heat is therefore just as important as insulating against the cold. Insulating with **STYLE** will help you make quick, significant and lasting savings on your energy bills.



ORDER STYLE



Product	Item code	EAN		
STYLE loose-fill insulation	A12130	3585501121302		
Packaging	Number of bundles per pallet	Weight per pallet	Number of pallets per 1/2 lorry	Number of pallets per full lorry
Bundle of 12,5 kg	36	450	12	22

EXAMPLE FOR 100 M²

Thermal resistance (m ² K/W)	R=7	R=8	R=10
Number of bundles to be blown	29	34	42
Height (mm)	360	415	520
Total weight (kg)	363	425	525
Coverage (kg/m ²)	3,63	4,25	5,25

ORDERING INFORMATION



VAPOUR BARRIER

COMBINED OFFER

1/2 LORRY LOAD

= 12 PALLETS



2% DISCOUNT

COMPOSITION

- + 1 pallet of **VAPOUR BARRIER***
- + 1 pallet of **STYLE**
- + 2 pallets of **BREF (or STYLE)**
- + 7 pallets of **SEMIN FLEX+ maximum**

COMBINED OFFER

CAMION COMPLET

= 22 PALLETS



3% DISCOUNT

COMPOSITION

- + 1 pallet of **VAPOUR BARRIER***
- + 2 pallets of **STYLE**
- + 3 pallets of **BREF (or STYLE)**
- + 15 pallets of **SEMIN FLEX+ maximum**

*Mixable references: SEM VAP (40 rolls/pal.) and SEMIN REGUL VAP (24 rolls/pal.) – 50 lm rolls (75 m²)



POSSIBILITY OF DELIVERY

to two delivery points
within 30 km of each other



Consult the list of available insulation materials (thicknesses) here

**CONTACT
THE SEMIN
TEAM**

✉ isolation@semin.com
☎ + 33 (0) 4 68 38 58 42
☎ + 33 (0) 3 44 89 79 65



Visit the **STYLE** web page to see the table of consumption depending on the desired R rating.

STYLE

MILITANT INSULATION

MORE THAN INSULATION, A COMMITMENT!



826 936 TONNES
of clothes are brought to the market
in France every year



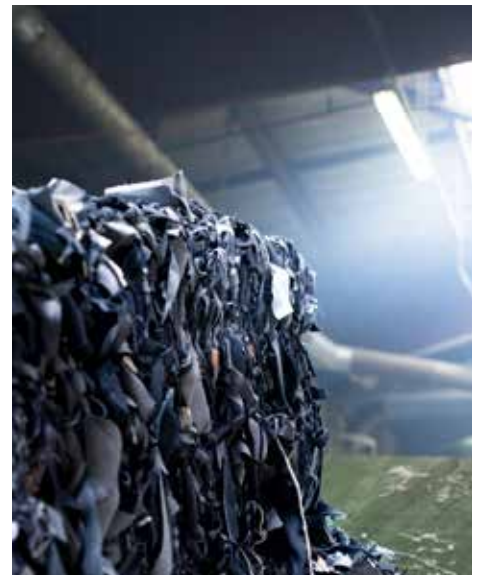
260 403 TONNES
are collected, i.e.

JUST 32%



93,03%

**OF THIS CLOTHING IS
EXPORTED AFTER SORTING**



**SEMIN DECIDED
TO ACT IN STYLE.
BY PRODUCING
INSULATION MADE
FROM 100% LOCALLY
RECYCLED AND
100% RECYCLABLE
TEXTILE FIBRES.**



**We shred the
equivalent of 5
million jeans a year
in our factory.**



Thanks to our network of community and social partners in central France, we collect end-of-life clothes from **local sources**.

Drawing on 200 years of know-how, we shred these garments and transform them into **STYLE** insulation.

STYLE

MILITANT INSULATION



**YOU CAN TAKE
ACTION TOO!
START SORTING
THROUGH YOUR
WARDROBE**

Clothes too small, out of fashion, no longer your style? You don't wear them any more? Don't let them pile up in your wardrobe and, above all, don't throw them in the bin! They can be worn by others or recycled. Start a new life, in style!

Help protect the environment and support people in difficulty (creation of sustainable jobs in collection, sorting, recycling) by sorting your clothes and taking them to drop-off points.

“ **Our raw material is lying dormant in the bottom of your wardrobe... we're counting on you to join the movement and contribute to the recycling and reuse of even more end-of-life clothes in France! Together, let's adopt bio-based insulation in STYLE.**

Caroline SEMIN

With STYLE, make a militant and responsible choice. Make a forward-looking choice for the next 50 years of your home!

SEMIN
INSULATION